



24" 36"

**COMPACT, FLEXIBLE,
FULL COLOR,
E/AO SCANNING**



FULLY FEATURED, CONVENIENCE LARGE FORMAT SCANNER



More than just great value

SD One+ packs a huge amount of value into its lightweight 24" or 36" size. Easy to use, with fully featured software, plus a control panel directly on the scanner.

Save time and money

This is a must have office scanner at a very attractive price. Scan your oversized maps, engineering and construction drawings in-house with SD One+ to save space, time and money.

Copy, share and collaborate

With unmatched ease of use and the highest possible accuracy, you can trust SD One+ on even the most complex projects.

Capture all your document types

Scan and document all your architectural, engineering and construction plans in standard file formats directly into your project folders.

Scan-to-email

Send your scan directly to your email or a USB flash drive.

Full color

SD One+ supports full color scanning.

All popular file formats

Supports all popular scan file formats – like PDF, TIFF and JPEG.

Energy Star 3.0 certified

Like all other Contex large format scanners, SD One+ is Energy Star 3.0 certified.

Need to move the scanner about?

Don't worry, SD One+ is light enough for one person to carry.

LIGHTWEIGHT AND AFFORDABLE



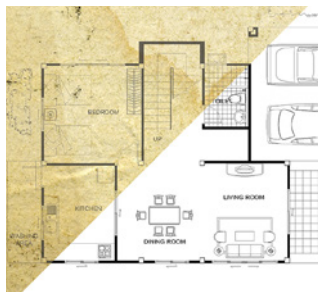
SD One+ SERIES

	SD ONE+ 24	SD ONE+ 36
Maximum scan width	24 inches (610 mm)	36 inches (914 mm)
Maximum media width	26.6 inches (676 mm)	38 inches (965 mm)
Weight	18.7 lbs. (8.5 kg)	24.9 lbs. (11.3 kg)
Dimensions	32.2x9.1x4.9 inches (818x231x124 mm)	45.6x9.1x4.9 inch (1158x231x124 mm)
SCAN SPEED (COLOR AND MONOCHROME) ¹		
150 dpi	3.8 inch per second	
300 dpi	1.9 inch per second	
600 dpi	1.0 inch per second	
OTHER SPECIFICATIONS		
Optical resolution	600 dpi	
Maximum resolution	9600 dpi ²	
Total number of pixels	15552 pixels	25920 pixels
Contex CFR ³	Yes	
Maximum media thickness	0.03 inch/0.75 mm	
Accuracy	0.1% +/-1 pixel	
Data capture	48-bit color, 16-bit grayscale	
Data output	24-bit color, 8-bit grayscale, 1-bit monochrome	
Connectivity	USB with xDTR	
ENERGY STAR® certified	Yes, version 3.0	
Operating system	Windows 11 64-bit, Windows 10 64-bit	
Included software ⁴	Nextimage Free (incl. TWAIN driver)	
Optional software ⁴	Nextimage Scan & Archive: Full-featured scanning software incl. multipage (PDF, PDF/A and TIFF) and full image quality controls Nextimage Repro: Full-featured scanning and copying software incl. built-in printer drivers and full color control	
File formats	TIFF, JPG, PDF and PDF/A files	
Additional file formats ²	PDF, PDF/A and TIFF Multipage, DWF, CALS, BMP, JPEG-2000(JP2), JPEG2000 Extended(JPX), TIFF-G3, others	
Power consumption (Ready/Power save/Scanning)	5.5/0.5/14 W, ENERGY STAR® Certified	
Power supply	External power supply 100 V / 230 V / 240 V, 60/50 Hz	
CERTIFICATION AND WARRANTY		
Safety	IEC 60950. Certificates: cUL (USA and Canada), CE (Europe), CCC (China), PSE (Japan), EAC (Russia, Kazakhstan, Belarus), KC (Korea), BSMI (Taiwan) and Ukr (Ukraine)	
Electro Magnetic Compatibility (EMC)	Compliant with Class A requirements, including FCC rules (USA), ICES (Canada), EMC Directive (EU), CCC (China), VCCI (Japan), EAC (Russia, Kazakhstan, Belarus), KC (Korea), BSMI (Taiwan), Ukr (Ukraine) and BIS (India)	
Enviromental	ENERGY STAR® Certified, EuP (EU), WEEE (EU), RoHS (EU) and REACH (EU)	
Country of Origin	Designed and engineered in Denmark. Manufactured in China	
Warranty	2-year warranty and fast, easy parts replacement	
In the box	Scanner (24" or 36" model), 2 m USB cable, external power supply, basic scanning software (Nextimage FREE), installation software and user guides in PDF on USB flash drive, installation guide, calibration poster, calibration sheet and cleaning cloth	

- Scanning speeds based on 24" wide document. Contex recommends Intel Core i5, AMD Ryzen 5 5500, or better 64-bit processors, 16 GB RAM and SSD SATA drive, min. USB 3.0 or Gigabit Ethernet.
- Requires Nextimage Free upgraded to Nextimage Scan & Archive or Nextimage Repro
- Color Fringe Removal (CFR) is an advanced Contex patented filtering technology designed to remove the fringes inherent in CIS strobing scanning devices
- Contex applications create industry standard raster file formats which can be used in any CAD or GIS application

All trademarks remain the property of their respective holders, and are used only to directly describe the product being provided. Their use in no way indicates any relationship between Contex and the trademarks holders.

Scan, enhance, file and share with Contex SD One+ large format scanner



Improve your originals
SD One+ is a fully featured scanner with dedicated scanning software included.



Flexible control panel
Scanner operation is easy with the intuitive SD One+ control panel.

HP ready **Océ ready** **EPSON ready** **Canon ready**

Contex solutions are compatible with all leading large-format printers.
See the full list at contex.com/nextimage-supported-printers



contex
WHEN IMAGING MATTERS



1148 Rochester Road, Troy MI 48083 | www.azon.com | info@azon.com | (800) 260-0839